

PORTNEUF VALLEY ROLLER DERBY



**APRIL 18- DOUBLE HEADER
GAMES AT 4 & 6 PM**



NEXT HOME GAME JUNE 13TH

WAIT... WHAT'S HAPPENING?

GAMEFORMAT

Roller derby is played in two halves. Each half is split into two minute segments called jams.

NUMBER OF PLAYERS

There are a maximum of ten players on the track at any given time. Five from each team. If they're not on the track, check the penalty box!

PACK

The eight players standing in between the jam line and the pivot lines are the blockers. They make up a pack. The pack plays simultaneous offense and defense.

JAMMER

Jammers start behind the pack and have stars on their helmets. They are the only players able to score points.

LEAD JAMMER: TWO SHORT WHISTLES

On the initial pass, jammers compete for the title of lead jammer. They become lead jammer by legally passing all members of the opposing team. You know the lead jammer because her referee will be pointing at her. She can end the jam early.

JAM ENDING: FOUR SHORT WHISTLES

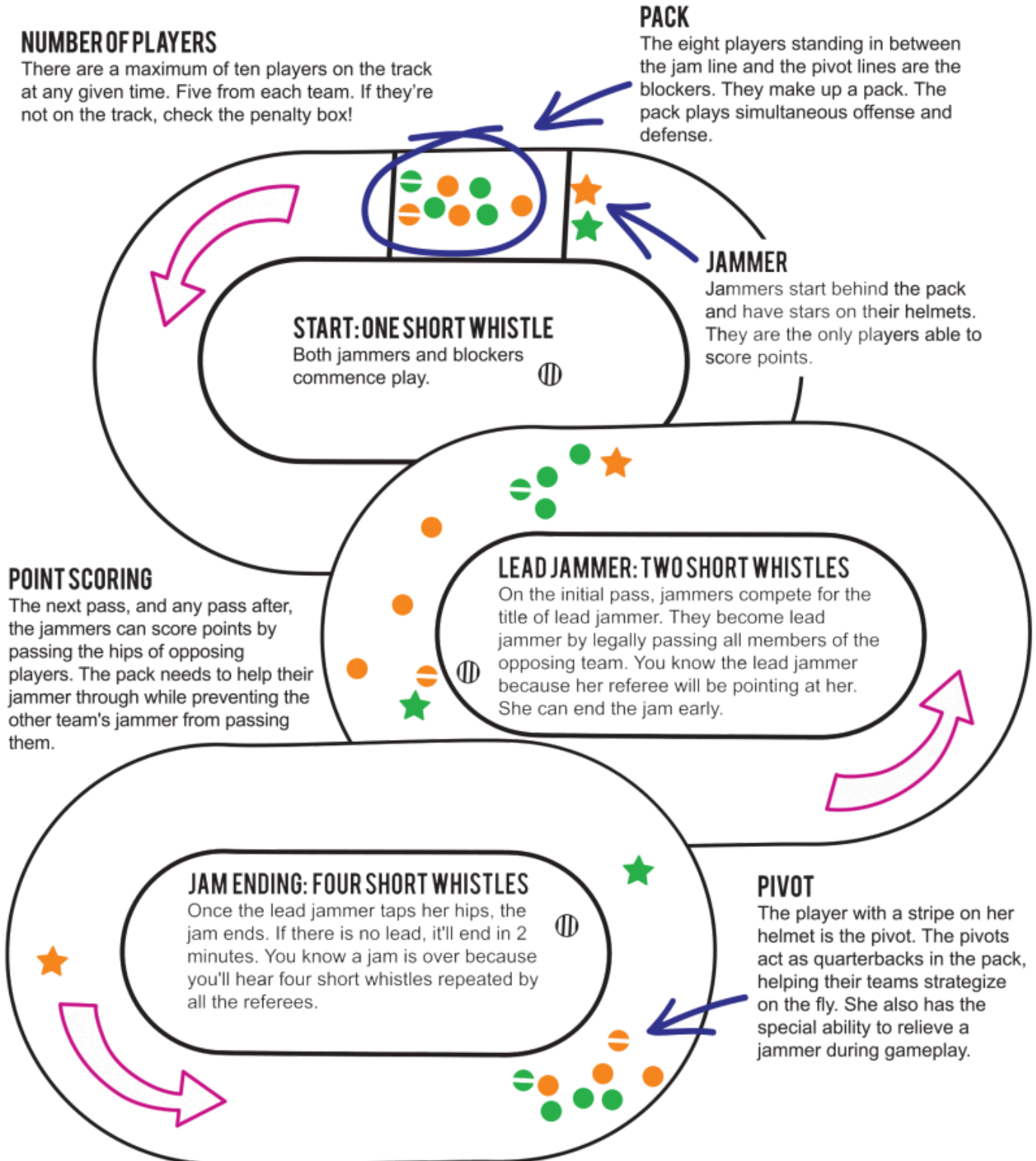
Once the lead jammer taps her hips, the jam ends. If there is no lead, it'll end in 2 minutes. You know a jam is over because you'll hear four short whistles repeated by all the referees.

PIVOT

The player with a stripe on her helmet is the pivot. The pivots act as quarterbacks in the pack, helping their teams strategize on the fly. She also has the special ability to relieve a jammer during gameplay.

PENALTIES

Any player who commits a penalty earns a trip to the penalty box for 30 seconds.





TRIIXE TITANIUM 76
ASSAULT E. HAG 7
SCREAM'N TURBO 876
SOUL SNATCHER 628
MELUCIFER 666
MISS MAYHEM 380

PHANTOM OF THE DROPYAH 303
SKATE OF DECAY 3
SKYSCRAPER 411
VENUS THIGH TRAP 636
BANANA SPLITS 828
COACH: BEAR TITANIUM



LOU'NA'TIC 22
DINOMYTE 26
WHOOPIE 222
MIRDUH 275
HOOPER 42
MINI MAYHEM 44
SLIM REAPER 47
CHAOTIC COUGAR 56

HUCKLEBERRY 5716
PAWG 7
LINDIESEL 74
SUNNY STORM 78
B.O.B 808
COACH: BEASTIE
BENCH COACH: MILLES
BENCH COACH: CHELSEA DAGGER



TOXYJEN 02
BEASTIE 11
HIPPIE 13
MEGAN RAGE 1337
SALTY STINGER 2
SKULLCRUSHER 27
MIRDUH 275

HAY HAY 28
STOVETOP RAMEN 29
PAWG 7
B.O.B 808
EBALL 84
MISS MELADJUSTED 9
COACHES: GRUMPY & SLIM

WYDAHO

MELUCIFER 666
TRIIXE TITANIUM 76
ASSAULT E HAG 26
MISS MAYHEM 380
PHANTOM OF THE DROPYAH 303
SOUL SNATCHER 628

AJENT MAYHEM 78
SANCTUM 1
PANAMANIAC 9
JOKER 8
ROBO
RAJUN CAJUN 222

BIG THANKS TO OUR SPONSORS, REFS, AND NSO'S WHO MAKE THIS POSSIBLE

•MELISSA LILE•

Artistry Inc.



DESIGN STUDIO



SPONSORSHIP
INFO ON
OUR WEBSITE:



AFTER PARTY 9PM
2891 SOUTH 25TH EAST
AMMON, ID 83406